

LEAGUE



SAINTS

**FAN GUIDANCE
ON THE RETURN TO THE
TOTALLY WICKED STADIUM**

BEFORE ATTENDING THE STADIUM ON MATCHDAY

All the information you will need in advance of attending the fixture is contained in this guide...

Above all, we want to make the match as enjoyable as possible for fans in a safe and secure manner.

Firstly, before attending the fixture, you must ensure that yourself and all Members of your party do not attend if you have any symptoms of Covid-19 or are currently self-isolating.

Those fans at higher risk of more severe infection (which may include, but not be limited to, individuals classified as clinically extremely vulnerable or vulnerable) should assess if it is appropriate for them to attend.

All fans should make an assessment of their own risks associated with attending the fixture before they decide to attend.





TOTALLY WICKED® STADIUM

PLAN YOUR JOURNEY & TRANSPORT

Where possible, fans should avoid using public transport en route to the game, to ensure no overcrowding occurs in transit.

Please be advised that Town Centre car parking provisions have been updated since the 2020 season. Fans will be able to use all open-air car parks across the Town Centre for free on matchdays. All car parks and on-street parking bays except Tontine and St Mary's Multi-Storey Car Parks will also be open for match day parking for free.

There is no parking available at the stadium site. Disabled parking is only available by appointment only.



OUTSIDE THE STADIUM & TURNSTILE ENTRY

Fans should avoid gatherings in all areas en route to the Totally Wicked Stadium, including in the area immediately outside the venue both pre and post-match, as well at any other venue or establishment entered in advance of attending the venue.

You should maintain social distancing at all times and not exceed the Government legal limits on gathering outdoors when making your way to the venue.

You must enter the stadium within the time window and via the turnstile numbers indicated on your match allocation ticket.

These times and guidance are designed to avoid congestion with fans entering and exiting the venue.

Fans accompanied by children are responsible for supervising them at all times.

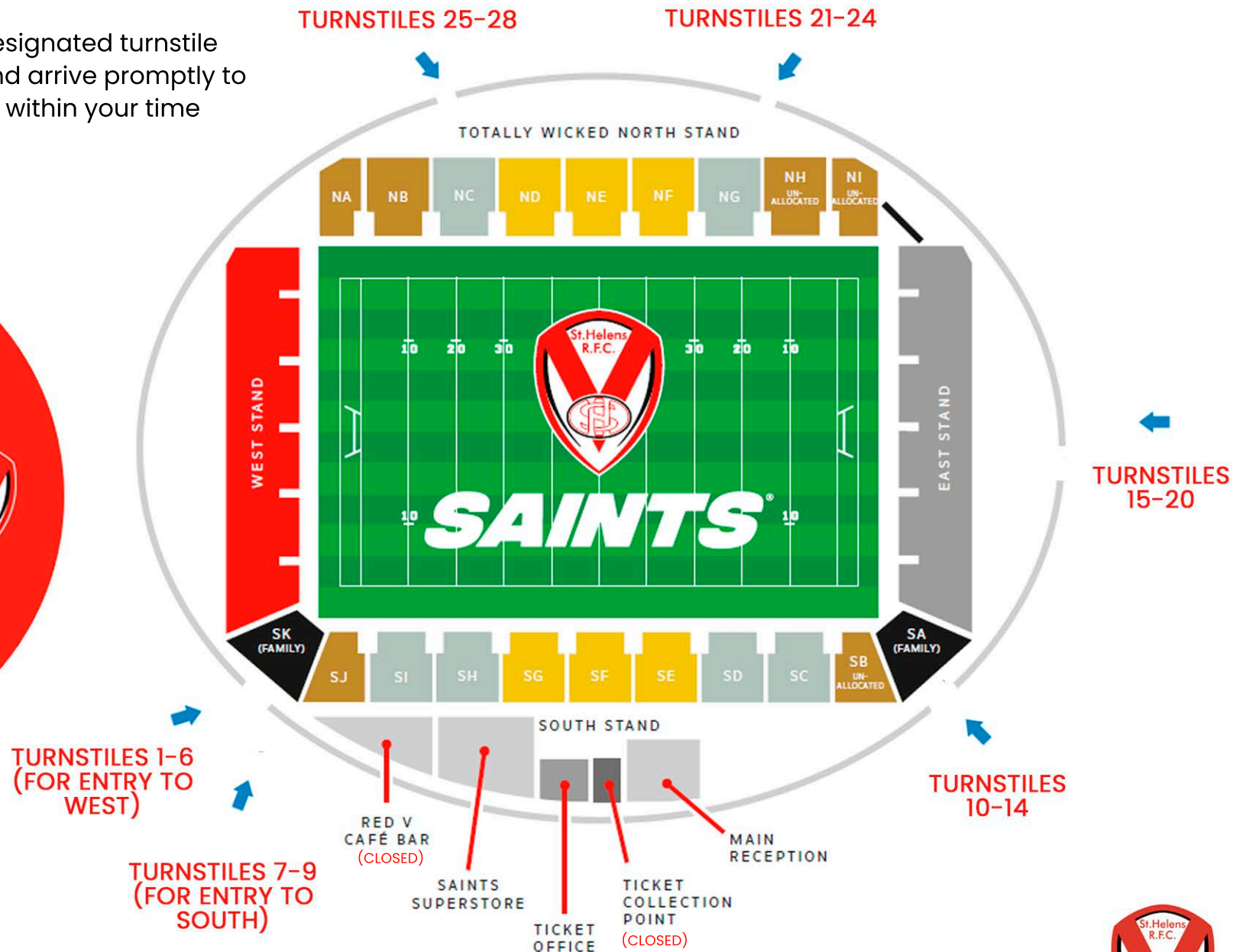
Turnstile numbers are marked above each entrance >



STADIUM & TURNSTILE MAP



Please familiarise yourself with your designated turnstile entry point in advance of the fixture and arrive promptly to gain access to your allocated position within your time window.



SUPERSTORE & STADIUM KIOSKS

The Saints Superstore at the Totally Wicked Stadium will be open on matchday until 7:15pm (30 mins before KO) There will be social distancing measures in place inside the Superstore including a limit on capacity. Payment via contactless card method is advisable.

For the three home fixtures in advance of 21st June, kiosks in all areas (including the RedV Bar) will remain closed.

Fans can bring their own refreshments in a clear plastic bag, however any plastic bottles will be de-capped on entering the stadium. No alcohol or any liquid in a glass bottle is permitted to be brought into the stadium.

Government policy means that we cannot serve refreshments to fans in a standing terrace, therefore we don't feel comfortable opening any of our kiosks, which would have meant some fans having a reduced experience to others.

The Ticket Office will be open pre-match for general enquiries only but no ticket collections.



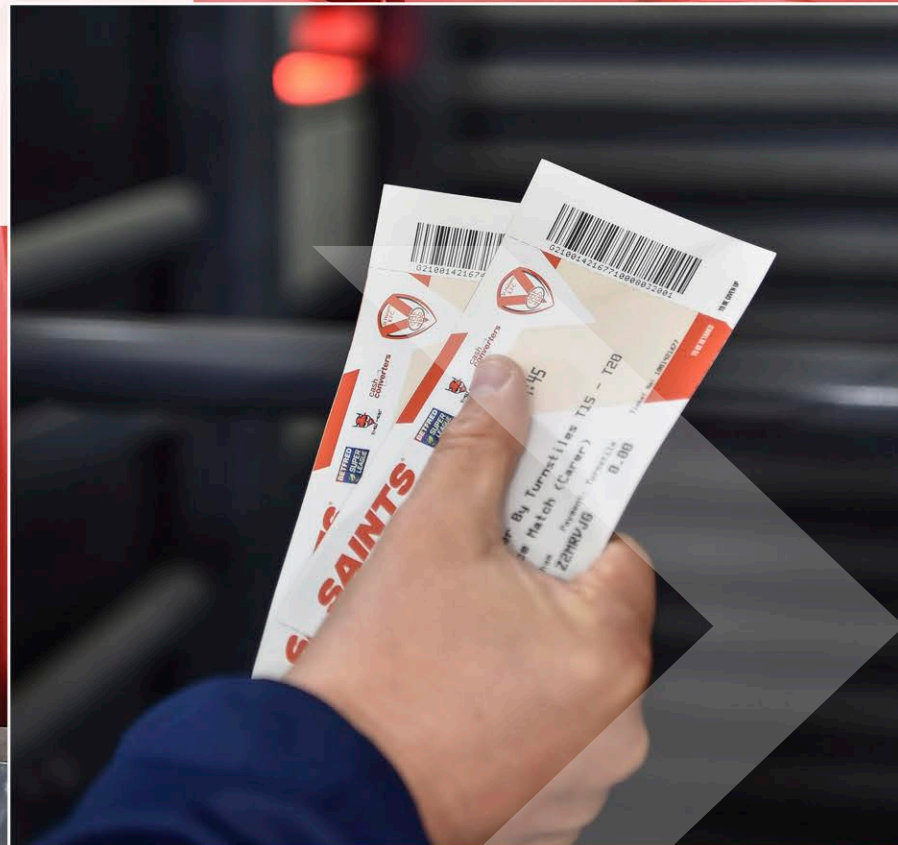
SEATED AREAS

Upon arrival at your designated turnstile, scan your match allocation ticket on entry and then make your way to your seat.

You do not need to scan your 2021 Membership card.

As per the terms and conditions of the sale of your 2021 Membership, you will be allocated a seat (or position in a standing terrace) as close to your Membership position as possible. However we cannot guarantee that you will be allocated a position in your chosen stand.

You **MUST** remain in your allocated seat and not move to any other seat or location within the stadium other than to use the stadium amenities e.g. toilets.



STANDING TERRACE AREAS

Fans allocated tickets to the West or East Stands which are solely terraced areas, will need to arrive promptly within the time window assigned on their allocation tickets.

The standing terraces will be segmented into a number of sections to better facilitate social distancing.

Fans arriving in either of these stands must arrive with the party they intend to stand near before entering the venue (whilst still maintaining social distancing in line with Government Guidelines), to ensure they are stood in the same segmented standing area, however this cannot be guaranteed.

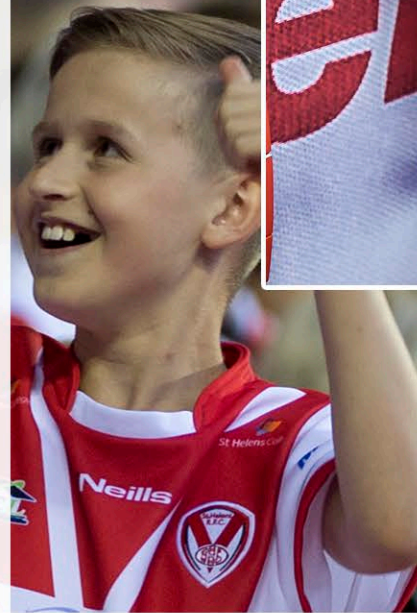
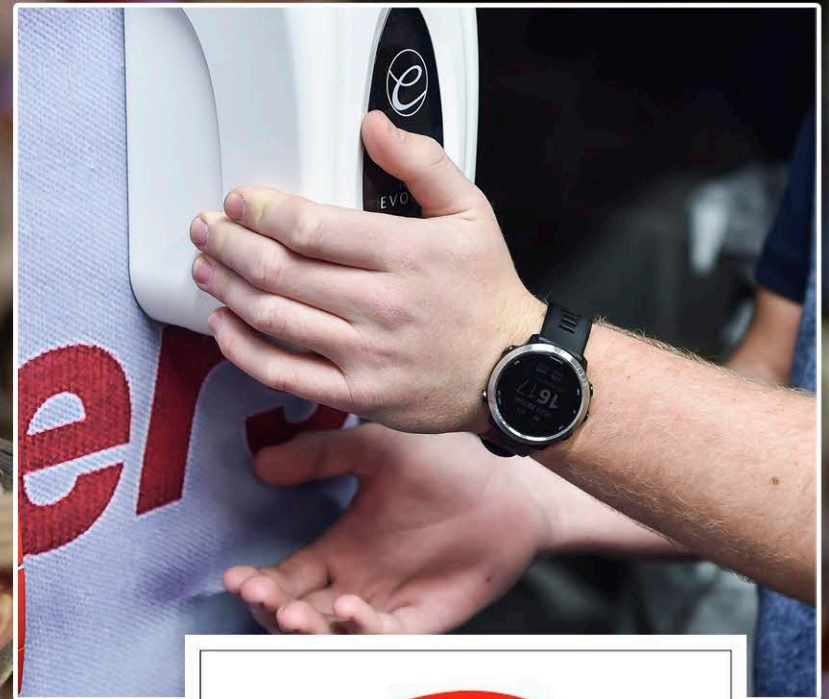


FAN CONDUCT

Please be aware that your attendance to the fixture constitutes acceptance of the Club's updated and expanded Ground Regulations visible online at: saintsrlfc.com/memberships and clicking the 'T&CS' link.

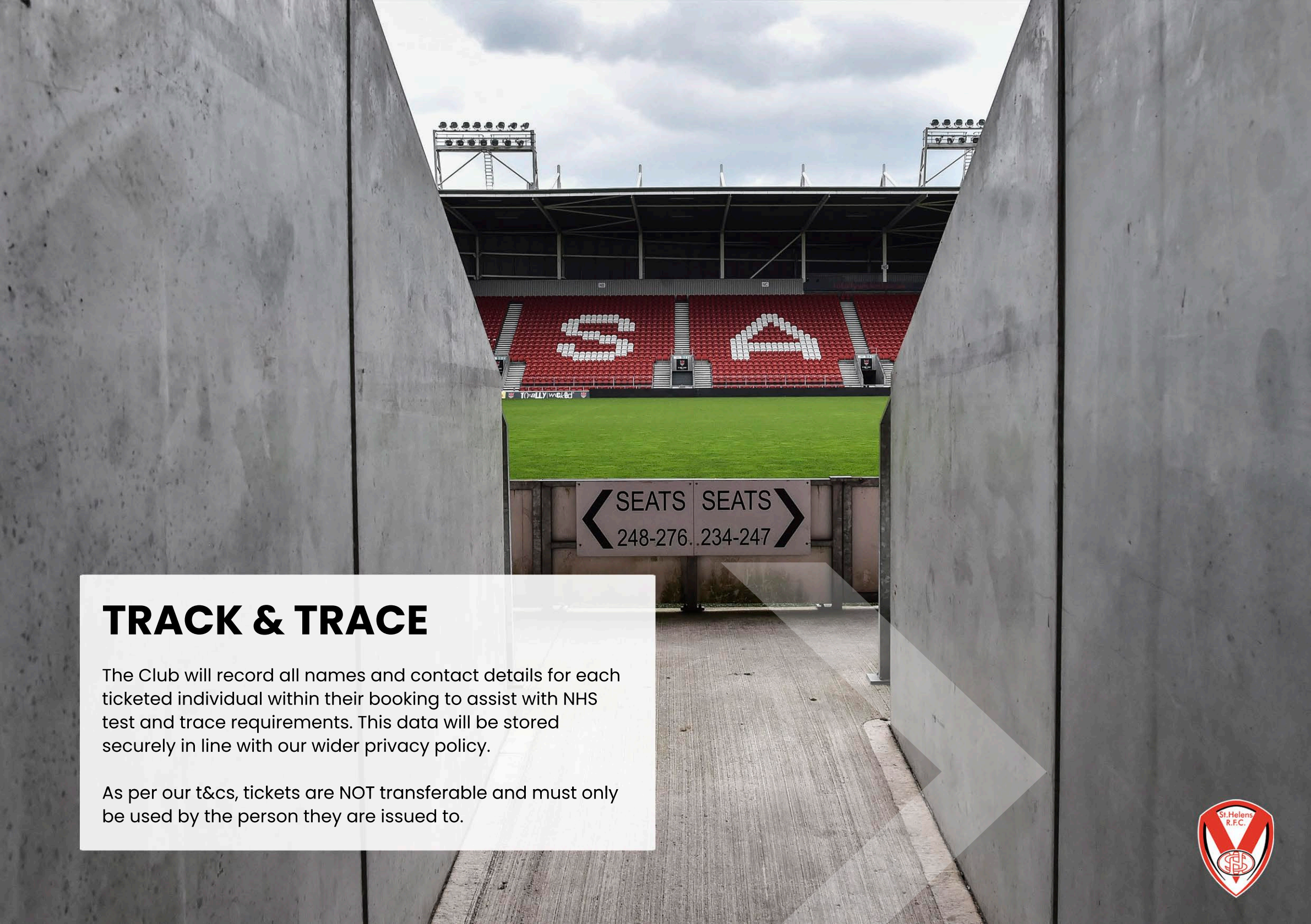
This includes fans complying with the below guidance:

- > Compliance with all social distancing regulations within the stadium. This includes but is not limited to – turnstile entry, the Club Superstore, walkways, concourses, seated/standing areas and toilet facilities.
- > You will be required to wear a face covering in designated areas within the stadium unless medically exempt – for which you must inform the Club in advance with proof of your exemption.
- > Observe all instructional signage, tannoy announcements and any guidance given by stewards.
- > Observe hygiene protocols including but not limited to hand sanitising at key points in the venue.
- > Please be considerate and patient with other fans and our staff at all times.



FACE COVERINGS
MUST BE WORN AT
ALL TIMES





TRACK & TRACE

The Club will record all names and contact details for each ticketed individual within their booking to assist with NHS test and trace requirements. This data will be stored securely in line with our wider privacy policy.

As per our t&cs, tickets are NOT transferable and must only be used by the person they are issued to.





WE WILL RETURN...

The Club understands how tough life has been for many of our fans since the beginning of the Pandemic.

We are confident that things are progressing in the right direction and that soon you will be back to full capacity at the Totally Wicked Stadium. Until then your support will be even more crucial as the team strives to win a third consecutive Super league Title.

Thank you again for your unwavering support and for your patience in these testing times.





BETFRED
BETFRED
BETFRED
BETFRED

**WE CAN'T WAIT TO
WELCOME YOU BACK....**





SAINTS

THANK YOU